


SELFIE XPRESS

Creating memories of togetherness

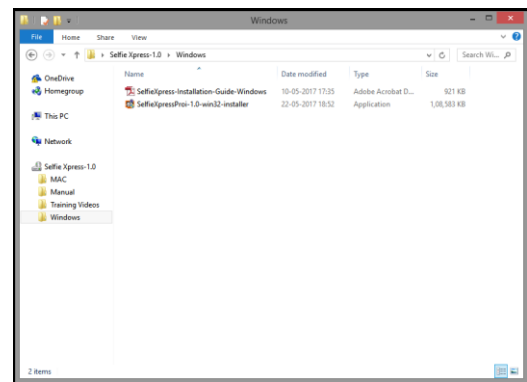
Selfie Xpress Installation Guide

- 1) Insert the installation DVD and click on  SelfieXpressProi-1.0-win32-installer

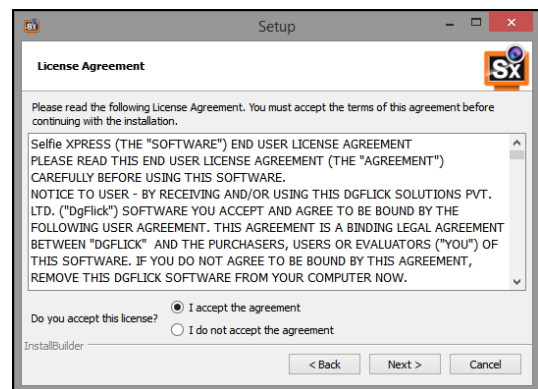
Note:

System requirements:

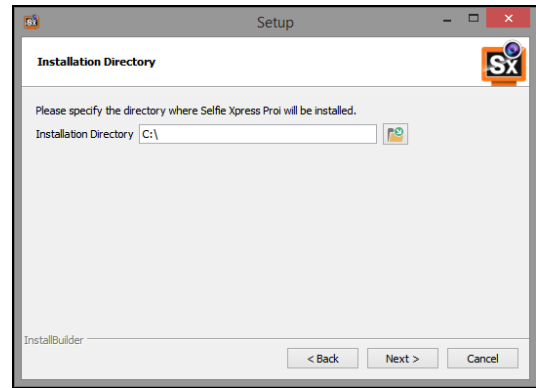
- ❖ Pentium 4, 2.8 GHz Processor and above
- ❖ 1 GB RAM + 1 GB free disk space
- ❖ CD/DVD- ROM drive
- ❖ Microsoft Windows XP (service pack 2)/Microsoft Windows 7/ Microsoft Windows 8
- ❖ USB Port



- 2) Click on 'Yes' on the User Account Control window, if you are sure you want to proceed with the installation; clicking on 'No' will abort the process.
- 3) Read the License Agreement carefully. If you agree to the terms, click 'I accept the agreement' and click 'Next'.



- 4) Select the installation path of your choice on your computer.
Click 'Next' after making your choice.



- 5) An icon denoting a shortcut for access to the software is created on the desktop. You can double click on it to start the software.